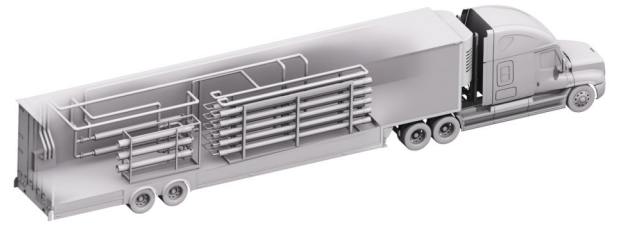




EXPANSA

Mobile Water Services

RO-5003 Mobile RO Trailer



Expansa provides reliable and operator friendly trailer-mounted Reverse Osmosis (RO) Systems for a wide range of industrial applications. Each self-contained trailer includes a twin RO skid (dual single pass or double pass operation), high-capacity cartridge filters, and chemical feed pumps. All systems contain all necessary instrumentation and equipment for automatic operations including remote monitoring capabilities.



Operator Friendly System

Built with the operator in mind Expansa RO Trailers include ample working room, easy-to-change cartridge filters, an oversized HMI, auto flow and reject options, and advanced remote communications.



Efficient Design

Our unique trailer design enables Expansa to treat a wide variety of feed waters while producing flow rates of 300 gpm of permeate per trailer in single pass mode.



Advanced Controls

Our asset monitoring solution includes access to Expansa-analytics. This cloud-based remote monitoring and data acquisition system is designed to enhance the customer experience.



Zero Downtime

Mobile Water Systems can be used for unplanned or planned maintenance, long term water requirements, or other activities that change the plant water balance.

Ancillary Equipment

Expansa also offers a full range of support equipment and accessories as part of our turnkey solutions. This includes pre-treatment, booster pumps, hoses, tanks, cleaning systems, consumables, and operations and maintenance services.

Technical Specifications

Dimensions	53' L x 13' 6" H x 8.5'	Service Connections Inlet/Outlet/Drain	All connections are SS150# Flange. 4" / 4" / 4" / 2"(flush)
Weight	Shipping Weight: 28,000lbs Operating Weight: 42,000 lbs	Recovery	Single Pass 70% to 80% Double Pass 85%
Feed Water (gpm)	400 @ 40-80 psi	Membranes	TFC Brackish Water 400 sqft/element.
Product Water (gpm)	300 @ 10-40 psi	Array/Quantity	3:2 Array; 6M. 30 Membranes/Train 2 Trains/Trailer
Reject Water (gpm)	100 gpm @ 10-40 psi	Booster Pumps	15 stage Goulds VIS Submersible Pump
Electrical Requirements	480V / 3ph / 60 Hz / 200 amp	PLC Remote Com	AB Compactlogix eWON Flexy 205
Control Panel	NEMA 4X	Instrumentation	pH, cond, ORP, and flow (signet) pressure, temp (IFM)

EXPANSA

14730 Vickery Dr | Houston, TX 77032
 Phone: 800-297-6589
 Email: sales@expansa-inc.com
 Web page: www.expansa-inc.com



Disclaimer

Expansa believes this information is reliable and in with engineering practices. However, no warranties are made regarding the completeness. Users should evaluate product suitability for specific applications. Expansa assumes no liability for any damages resulting from the sale, resale, or misuse of its products.