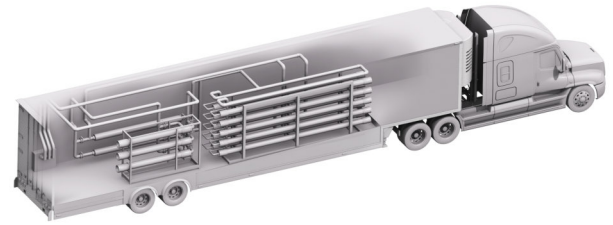




EXPANSA

# Mobile Water Services

## RO-5002 Mobile RO Trailer



Expansa provides reliable and operator friendly trailer-mounted Reverse Osmosis (RO) Systems for a wide range of industrial applications. Each self-contained trailer includes an RO skid, cartridge filters, and chemical feed pumps. All systems contain all necessary instrumentation and equipment for automatic operations including remote monitoring capabilities.



### Operator Friendly System

Built with the operator in mind Expansa RO Trailers include ample working room, easy-to-change cartridge filters, an over sized HMI, auto flow and reject options, and advanced remote communications.



### Efficient Design

Our unique trailer design enables Expansa to treat a wide variety of feed waters while producing flow rates of 100 gpm of permeate per trailer in single pass mode.



### Advanced Controls

Our asset monitoring solution includes access to Expansa-analytics. This cloud-based remote monitoring and data acquisition system is designed to enhance the customer experience.



### Zero Downtime

Mobile Water Systems can be used for unplanned or planned maintenance, long term water requirements, or other activities that change the plant water balance.

### Ancillary Equipment

Expansa also offers a full range of support equipment and accessories as part of our turnkey solutions. This includes pre-treatment, booster pumps, hoses, tanks, cleaning systems, consumables, and operations and maintenance services.

# Technical Specifications

<b>Dimensions</b>	53' L x 13' 6" H x 8.5'	<b>Service Connections Inlet/Outlet/Drain</b>	All connections are Male Camlock. 3" / 3" / 3"
<b>Weight</b>	Shipping Weight: 24,000lbs Operating Weight: 38,000 lbs	<b>Recovery</b>	Single Pass 70% to 80%
<b>Feed Water (gpm)</b>	150 @ 40-80 psi	<b>Membranes</b>	TFC Brackish Water 400 sqft/element.
<b>Product Water (gpm)</b>	100 @ 10-40 psi	<b>Array/Quantity</b>	3:2 Array; 5M. 25 Membranes/Train 1 Train/Trailer
<b>Reject Water (gpm)</b>	50 gpm @ 10-40 psi	<b>Booster Pumps</b>	15 stage Goulds VIS Submersible Pump
<b>Electrical Requirements</b>	480V / 3ph / 60 Hz / 100 amp	<b>PLC Remote Com</b>	AB Compactlogix eWON Flexy 205
<b>Control Panel</b>	NEMA 4X	<b>Instrumentation</b>	pH, cond, ORP, and flow (signet) pressure, temp (IFM)

## EXPANSA

14730 Vickery Dr | Houston, TX 77032  
 Phone: 800-297-6589  
 Email: [sales@expansa-inc.com](mailto:sales@expansa-inc.com)  
 Web page: [www.expansa-inc.com](http://www.expansa-inc.com)



### Disclaimer

Expansa believes this information is reliable and in with engineering practices. However, no warranties are made regarding the completeness. Users should evaluate product suitability for specific applications. Expansa assumes no liability for any damages resulting from the sale, resale, or misuse of its products.